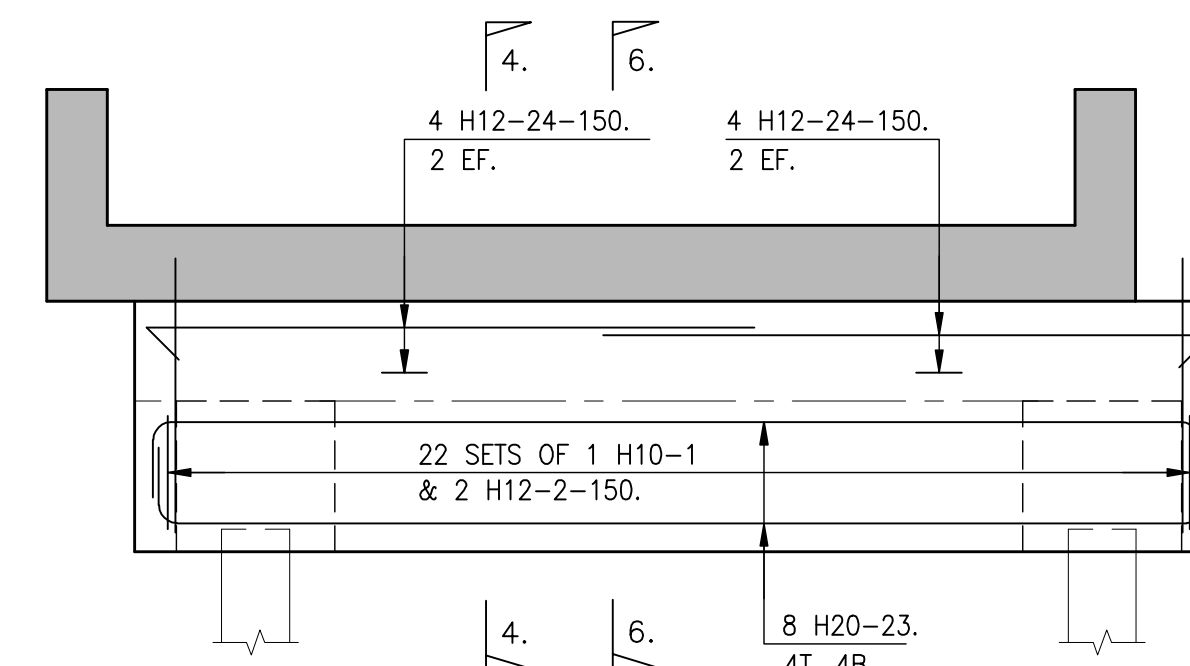
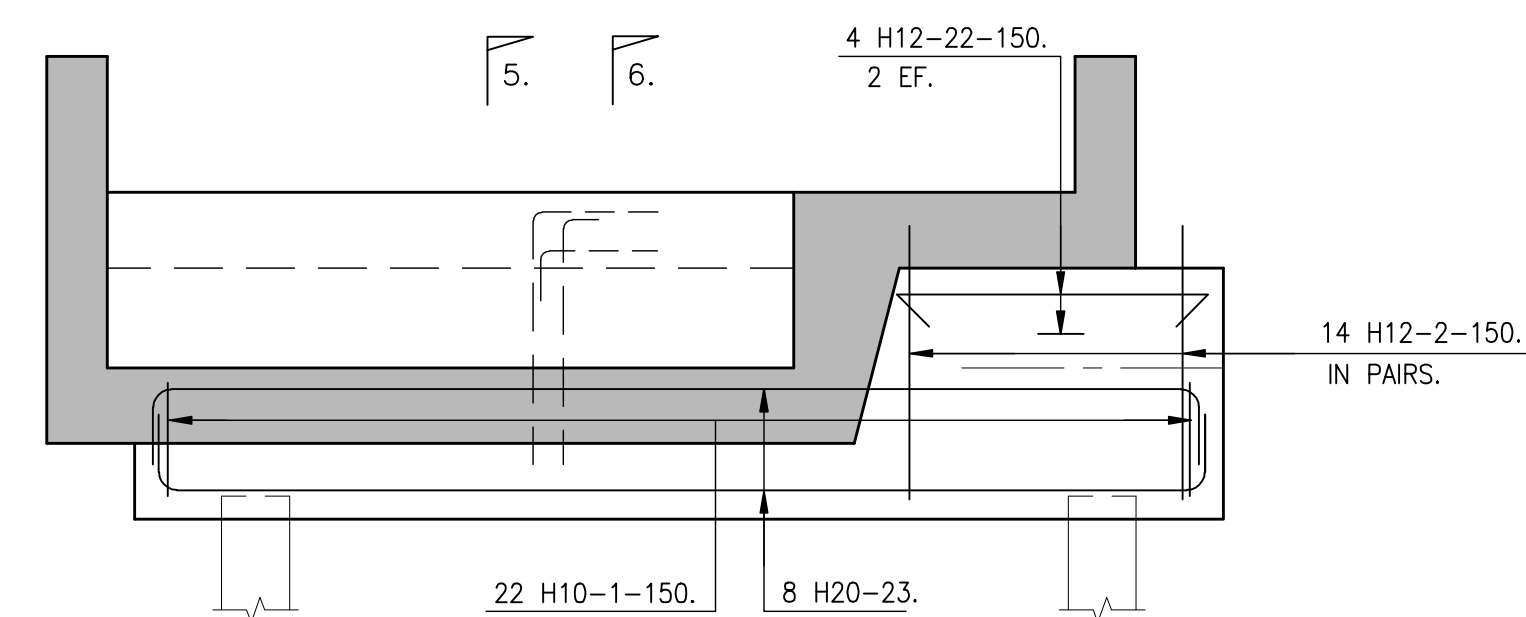
ELEVATION C-C.

ELEVATION D-D.
ELEVATION F-F SIMILAR.



ELEVATION E-E.

NOTES

1. ALL MATERIALS AND WORKMANSHIP TO BE STRICTLY IN ACCORDANCE WITH THE SPECIFICATION AND ALL RELEVANT BRITISH STANDARDS.
2. ABBREVIATIONS
B-BOTTOM T-TOP
EF-EACH FACE NF-NEAR FACE FF-FAR FACE
A-ALTERNATE BARS.
ABS-ALTERNATE BARS STAGGERED
ABR-ALTERNATE BARS REVERSED
3. ALL REINFORCEMENT TO BE HIGH YIELD TYPE B500A, B500B OR B500C RIBBED BARS TO BS4449:2005.
4. BENDING AND SCHEDULING OF REINFORCEMENT TO BE IN ACCORDANCE WITH BS 8666 : 2005
5. CONCRETE COVER TO ALL REINFORCEMENT TO BE 40mm UNLESS NOTED OTHERWISE.
6. REINFORCEMENT DETAILED ON THIS DRAWING IS SCHEDULED ON BAR LISTS Nos 319/1-4.
7. THIS DRAWING TO BE READ IN CONJUNCTION WITH RELEVANT ARCHITECTS DRAWINGS & SE/JC DETAILS.
8. ALL KICKERS TO BE 150 HIGH.

[illegible]

STATUS:-
AS BUILT

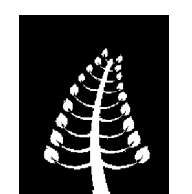
DRAWN BY _ _ BT. DATE _ _ DEC '07
CHECKED BY _ _ DATE _ _
PROJECT ENGINEER DATE

CLIENT.

CTP	S ^t JAMES
-----	----------------------

ARCHITECT.
FaulknerBrowns

CONTRACT
WAKEFIELD WATERFRONT
BUILDING 20



SEJC Consulting Engineers
Consulting Structural & Civil Engineers

Sanderson House, Station Road, Horsforth, Leeds LS18 5NT
Telephone 0113 2590090 Fax 0113 2586640

DRAWING TITLE

RC DETAILS OF PITS &
FOUNDATION OF FLOOD
BARRIER TYPE A
SHEET 1

SCALES 1:100 & 1:25

CONTRACT No	DRG No			
501180C	20-319			

